



██████████ is located on Othaya road Kileleshwa, setting new standards for comfort, luxury and convenience. It is in close proximity to shopping facilities like Lavington Quick Mart, Lavington mall just a 5 minutes' drive . The development comprises of affordable and spacious 1-bedroom and 2-bedroom apartments .

**Project features :**

Building area about 0,75 acre , 2 blocks of A & B , 14 floors in total plus 3 basement floors for parking , Ground floor full with amenities :

Full backup generator

well-equipped gym

swimming pool

children playground

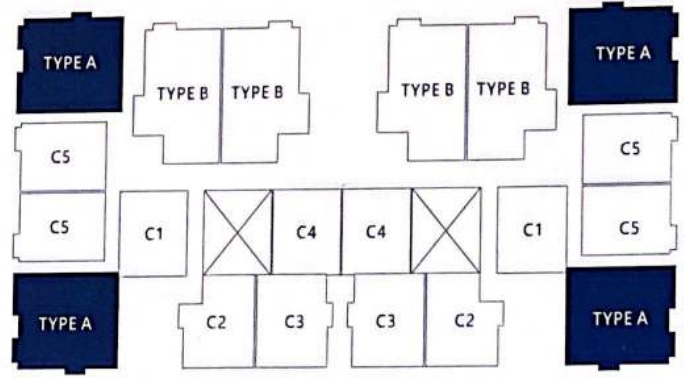
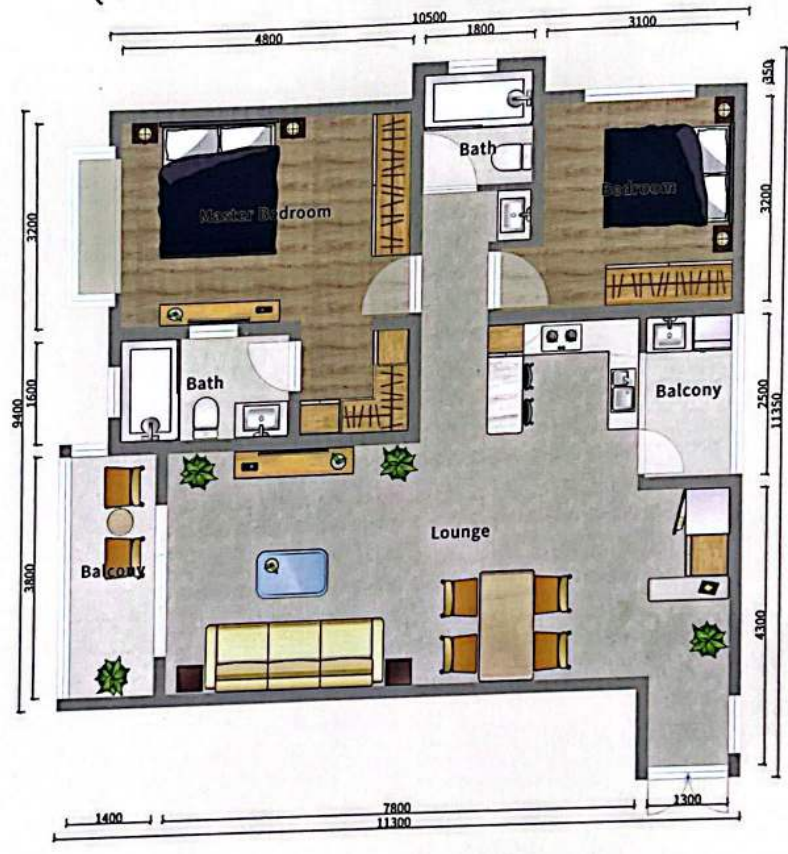
borehole water

high speed lifts

**Price: From Kes. 6.5 milliom**

Type **A** Size 121.9m<sup>2</sup>  
2-bedroom

11.5M



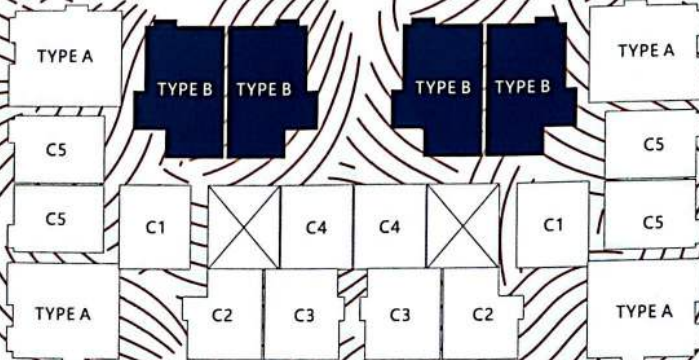
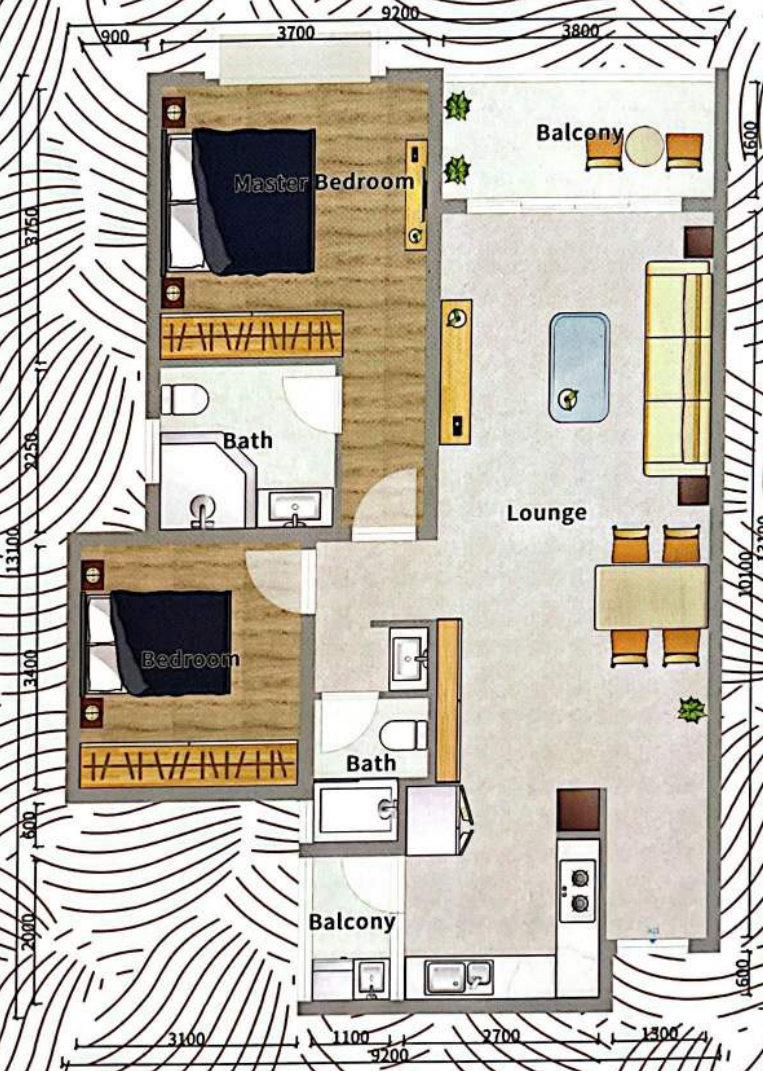
Type **B** Size 118.5m<sup>2</sup>  
2-bedroom

10.5M

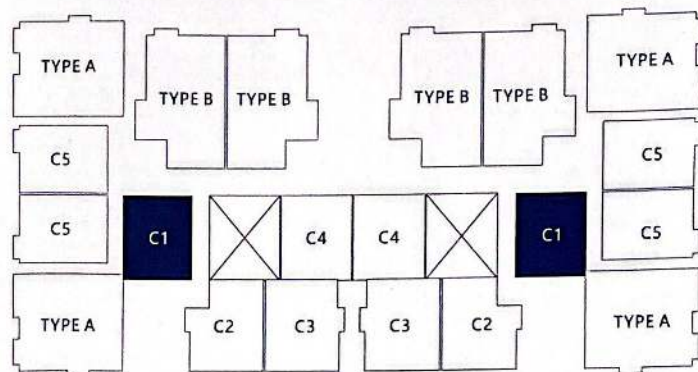
1-5th floor

N/M

7-14th floor



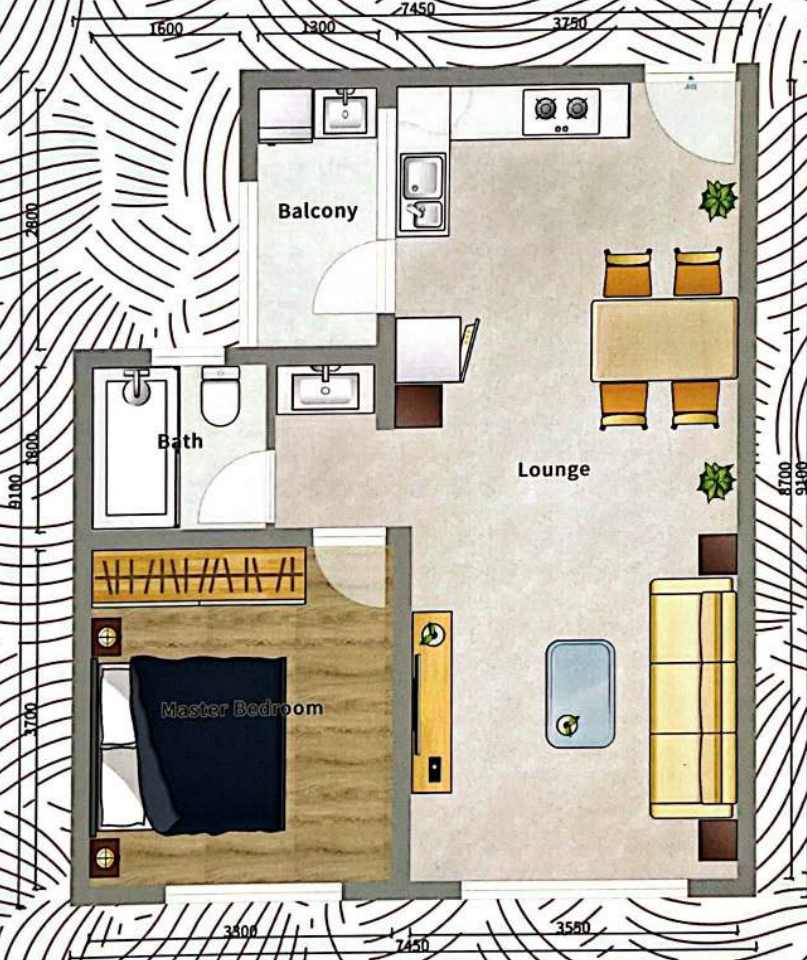
Type **C1** Size 74.1m<sup>2</sup>  
1-bedroom



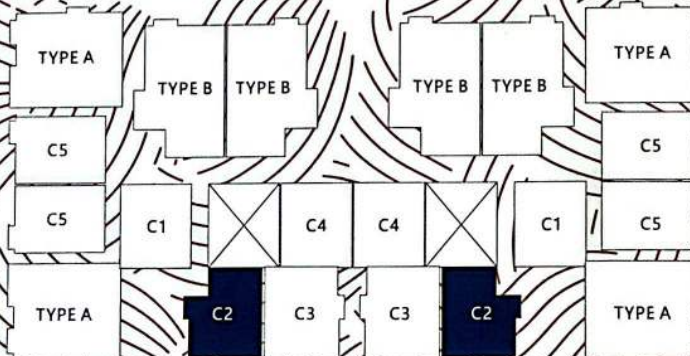
Type **C2** Size 71.9m<sup>2</sup>  
1 bedroom

17.5M

GSK  
Lobby



*Diamond Homes*



*Office*

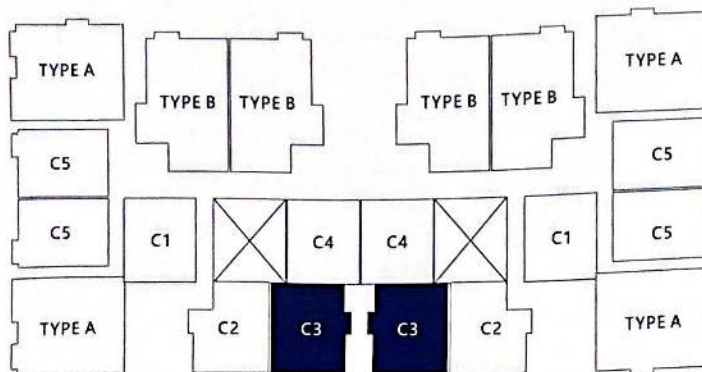
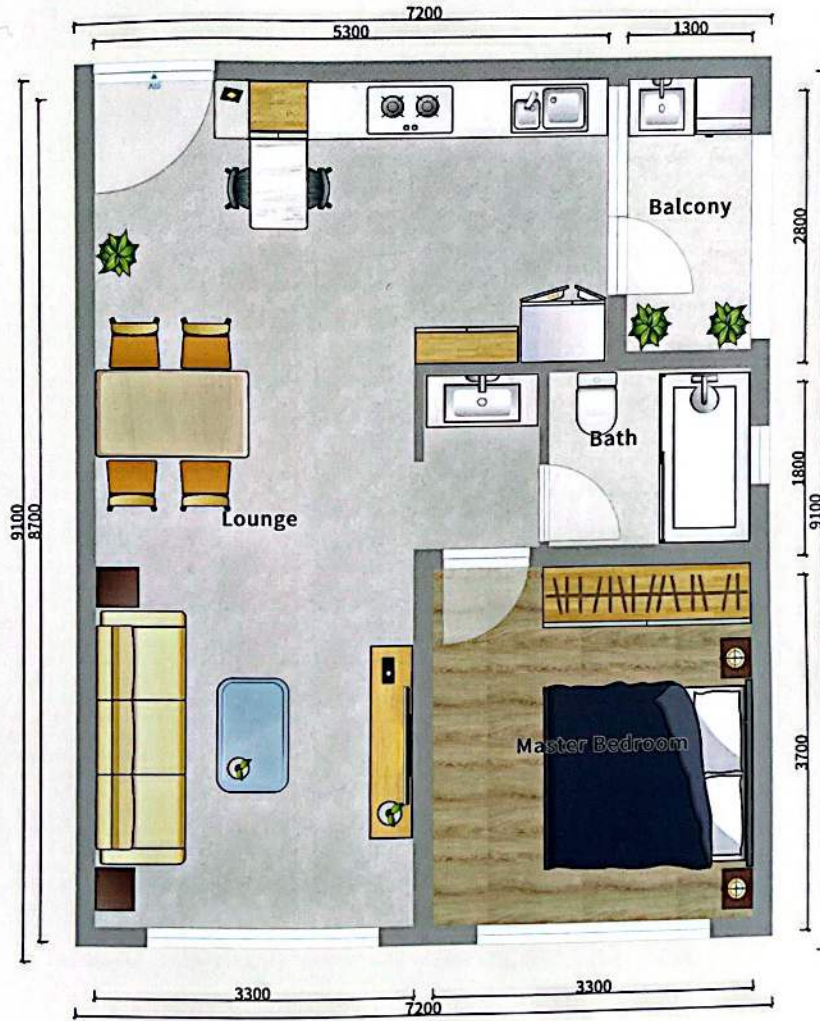
*Office*

*School*

Type **C3** Size 76.2m<sup>2</sup>  
1-bedroom

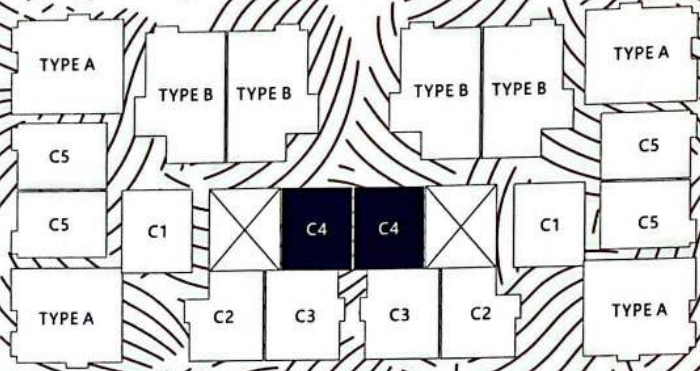
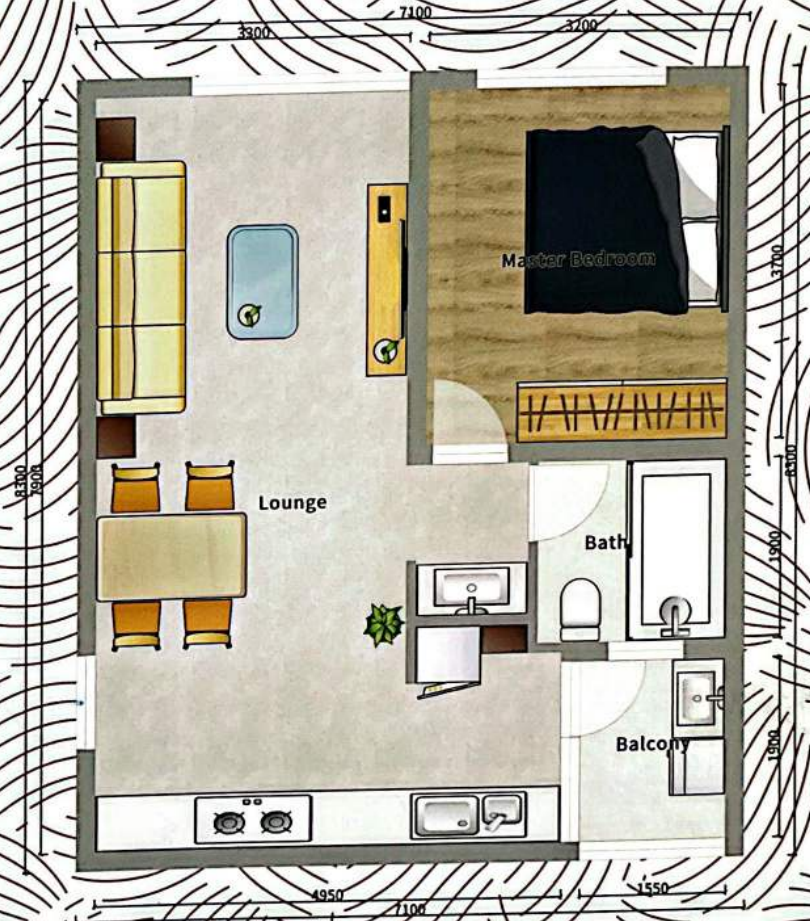
7.5 M

GSK left



Type **C4** Size 66.5m<sup>2</sup>  
1 bedroom

G.S.M



Show how Type  
~~Show~~  
 7.5m

# C5

Size 73.8m<sup>2</sup>  
 1-bedroom

